

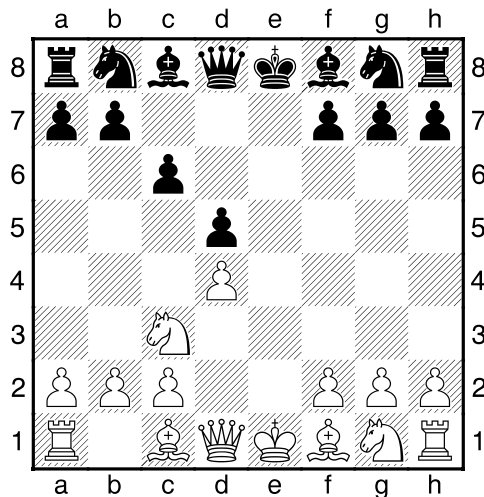
**(47) Magnus,Rokade - Theo,Verstappen [C01]**

Intern GESS Sittard, 05.11.2018

[Deep Fritz 14 x64 (15m)]

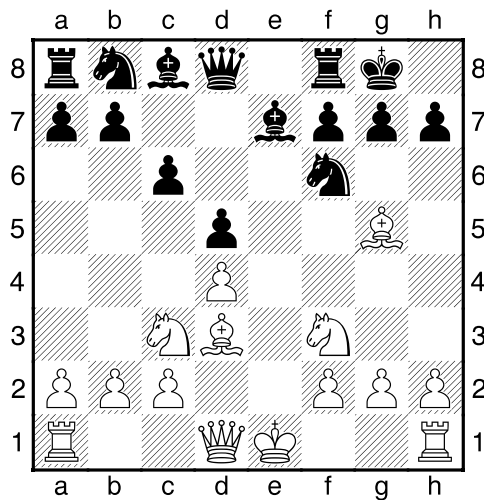
[C01: Frans: Ruil Variant]

1.e4 e6 2.d4 d5 3.exd5 exd5 4.Pc3 c6 [Diagram



]

5.Ld3 Pf6 6.Lg5 Le7 7.Pf3 0-0 [Diagram



]

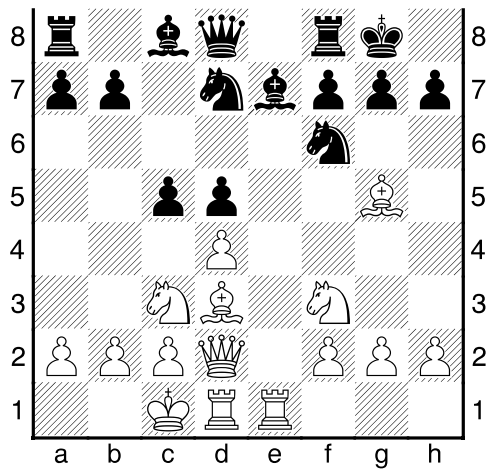
8.Dd2 [laatste zet uit boek. Wit heeft een actieve stelling]

8...Pbd7 [Zwart's positie is in het nauw. Wit kan zijn stukken niet verzetten: c8]

9.0-0-0 c5 [Wit heeft een actieve stelling]

10.The1 [Diagram



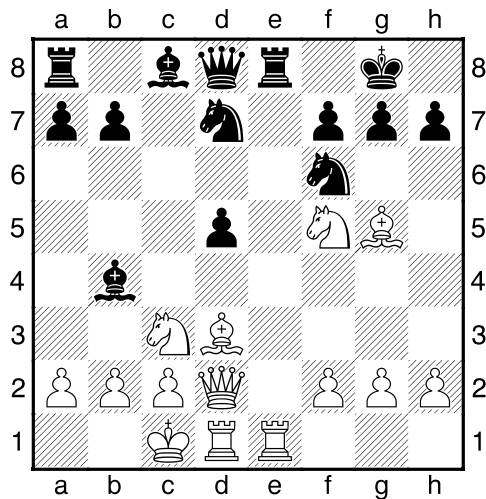


]

10...cxd4 [10...c4 11.Lf5=]

11.Pxd4<sup>2</sup> Te8? [11...Pb6!?? En er is nog hoop.]

12.Pf5+- Lb4 [Diagram

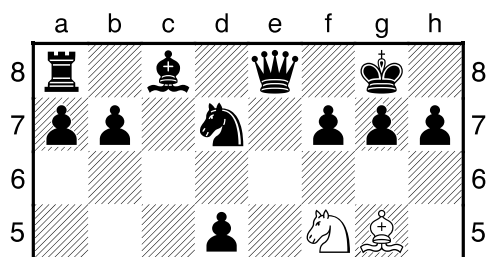


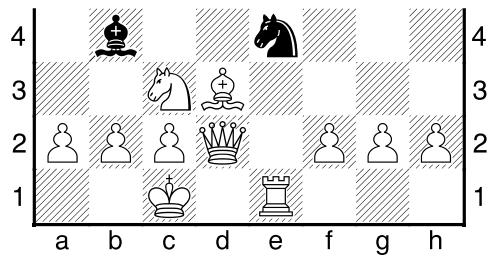
]

[12...d4 13.Pb5 Pc5 14.Pbxd4 Pxd3+ 15.Dxd3 Lxf5 16.Pxf5 Dxd3 17.Txd3 Lf8 18.Txe8 Pxe8+-]

13.Txe8+ Dxe8 14.Te1 [14.Pxg7 Lxc3 15.bxc3 Kxg7 16.Lxf6+ Kxf6 17.Dh6+ Ke7 18.Te1+ Pe5 19.Txe5+ Le6 20.Dh4+ Kd6+-]

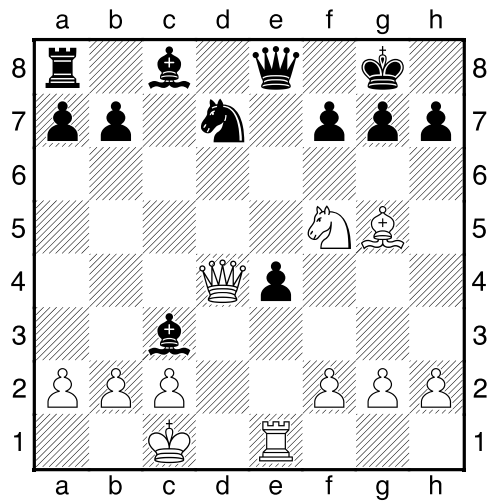
14...Pe4 [Diagram





]

15.Lxe4 dxe4 16.Dd4 Lxc3?? [Diagram



Het was al moeilijk.]

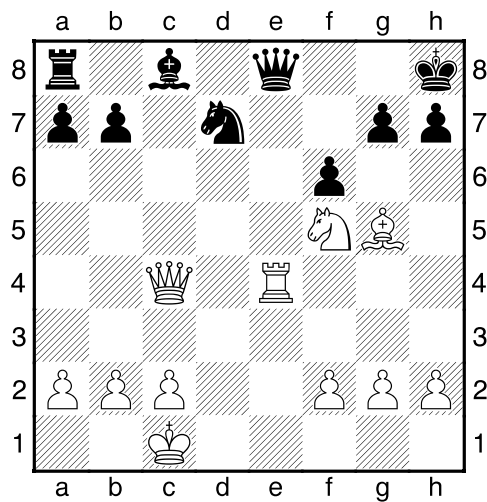
[16...De5!? 17.Dxb4 Dxf5 18.Pxe4 Dg6+--]

17.Dxc3 [17.Txe4 Geeft zwart geen enkele kans. 17...Pe5 18.Txe5+--]

17...f6 18.Dc4+ [18.Pd6 De6 19.Dc7 Pf8 20.Txe4 Dd7 21.Dc4+ Pe6+--]

18...Kh8 [18...Df7!? 19.Pe7+ Kf8 20.Dxe4 Pe5 21.Pxc8 Txc8±]

19.Txe4+-- [Diagram

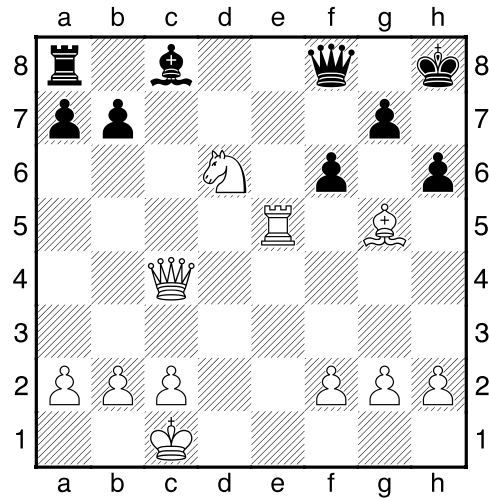


]

**19...Pe5 20.Pd6 Df8?** [20...De6 21.Pf7+! Deflectie: e5 21...Kg8 22.Pxe5 fxe5 23.Dxe6+ Lxe6 24.Txe5 Te8+–]

**21.Txe5!** [Lokaas: e5]

**21...h6** [Diagram



]

[21...fxe5 22.Pf7+ Lokaas Dubbele aanval]

**22.Te8** [22.Te8 Lg4 23.Txf8+ Txf8 24.Lxh6+–]

**1–0**